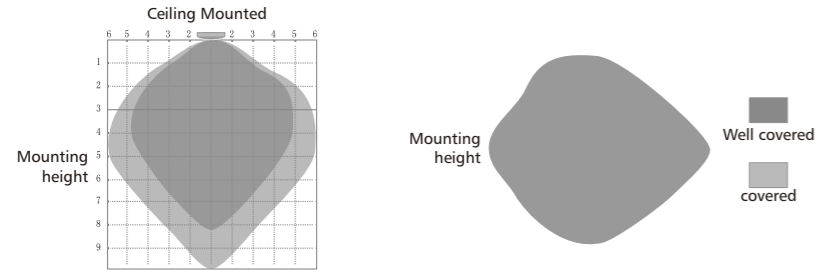
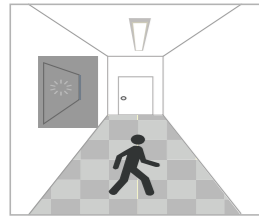


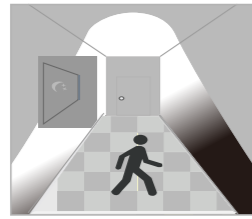
Detection coverage



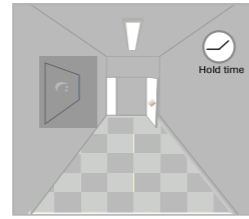
Application(Function Demo-On/off control)



With sufficient daylight, even when motion detected, light remains OFF.

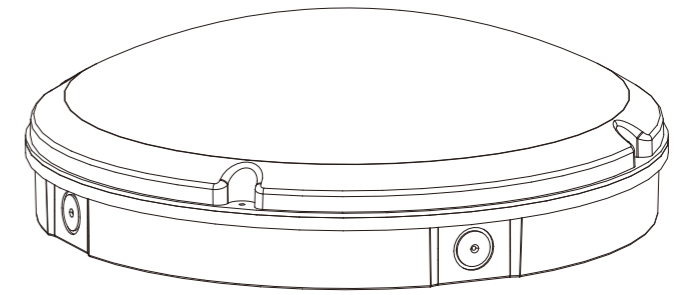


With insufficient daylight, when motion detected, light ON.



After the last detection and the present hold time elapsed, light OFF.

LED CEILING LIGHT USER GUIDE



LED CEILING LIGHT USER GUIDE

Safety Instructions

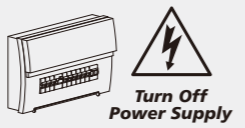
To ensure correct function and safety, please read and follow all instructions carefully before using the product

1. Turn off power supply before installation or before doing any maintenance work
2. Do not install any luminaire near the heat source
3. P grade please refer to product label, only IP65 can be used in damp locations
4. Do not exceed the nominal supply voltage or amperage ratings
5. Dimmable version could be compatible with a wide range of recommended TRIAC dimmers
6. All wiring and installation of the light fitting must adhere to local and national wiring rules
7. Take care not to pull any electrical wires during unpacking as this may damage the connection
8. Lay out all the components on a smooth surface and make sure there are no components missing before assembling
9. To avoid injury or damage to the fitting please ensure that power leads and screws are secure before connecting the power
10. Please keep instructions for future reference

Installation Procedure

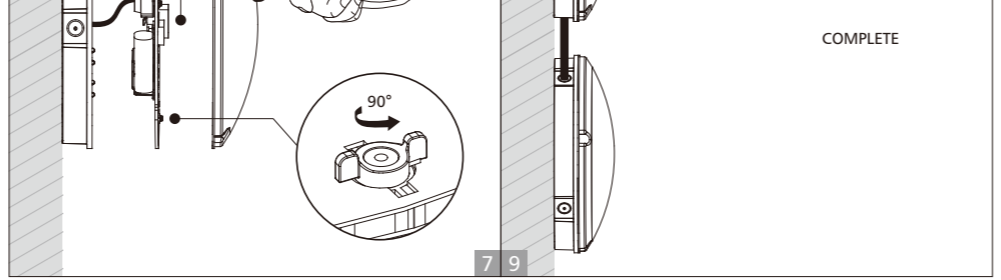
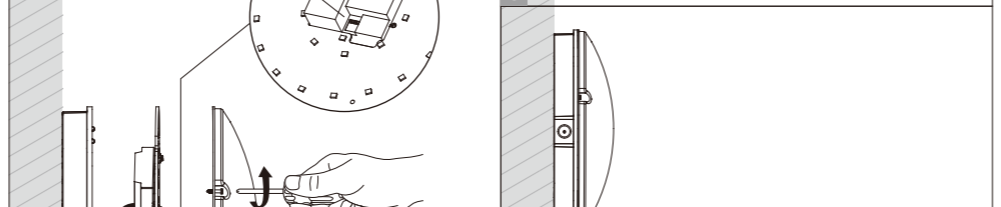
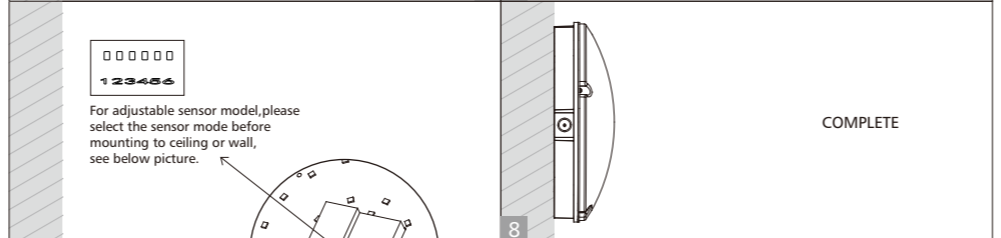
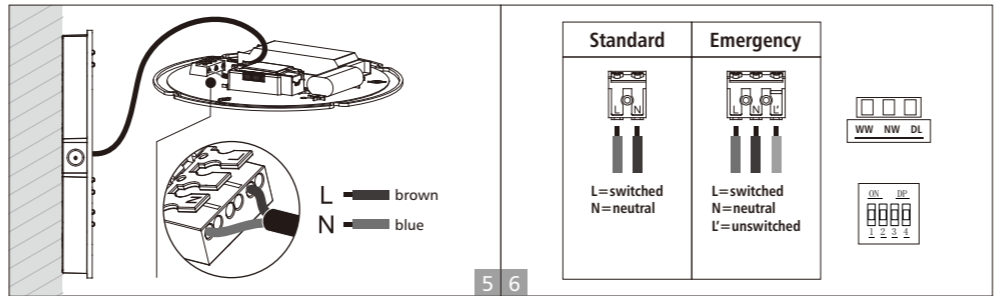
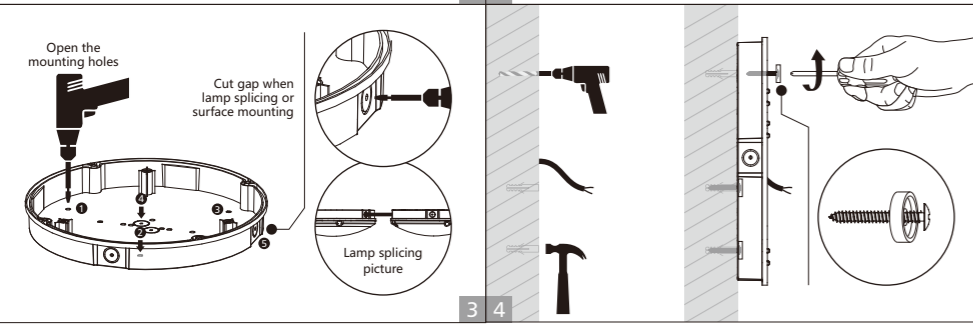
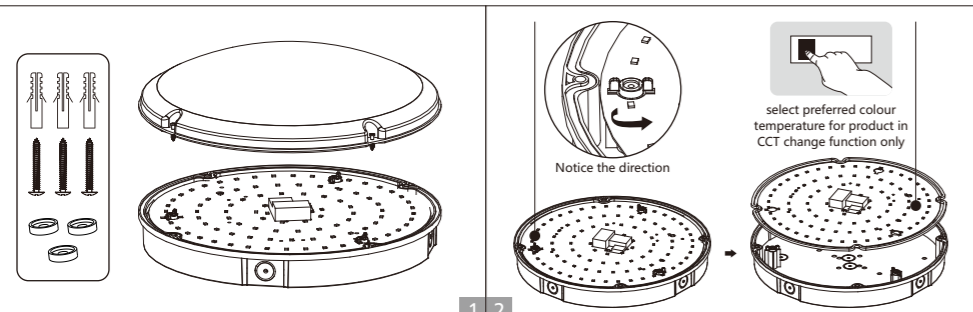
WARNING

1. Switch off before installation.
2. Switch on only after complete installation and examination of the circuit.
3. Professional electrician for installation and maintenance only.

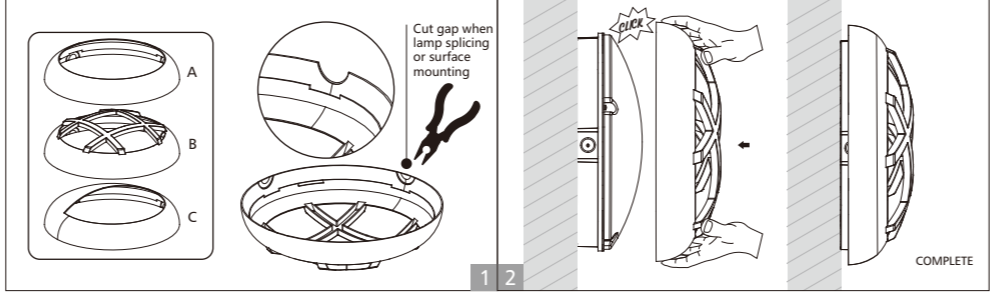


Turn Off power supply before starting any installation Read instructions & check you have all the tools & accessories to complete the installation correctly.

Wall mounted installation



Pressure ring mounting step



Functions Instruction(For specific function, please refer to actual model)



Emergency

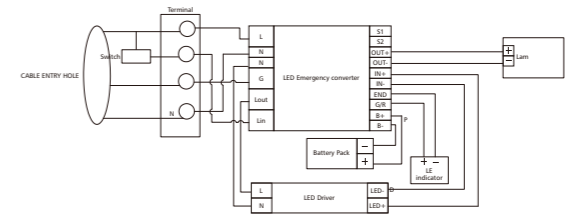
Emergency function switches automatically between power cut and power restoration
Li battery, high efficiency
Battery duration:3 hours
Charge period: 24 hours



Sensor

Detection area: 140 degree wide detective beam angle with 2-10 meters distance

Wiring Diagram



Cable connection

Mark	Description	Building wiring cable
L	Switched Active	Switch cable
L'	Unswitched Active	Unswitch cable
	Earth	Earth cable
N	Neutral	Neutral cable

Instructions for automatic test option

1. Once the unit is powered up it will automatically initiate a self test and diagnostics as follows:
 - Every 4 seconds: Check for battery disconnection, charger board fault, lamp failure and transformer failure.
 - Every month: Perform a 3minute duration test.
 - Every year: Perform a 1 Hour or 3 Hours duration test.
- All test functions are factory preset and do not need field adjustment.

2. Dual Colour Indicator LED Status Meanings

- Green Solid On Ready/Normal Operation
- Red Requires Service

•	One flash, 4 second pause	Battery not connected
••	Two flashes, 4 second pause	Battery short or low battery voltage
•••	Three flashes, 4 second pause	Charger board fault
••••	Four flashes, 4 second pause	Transformer fault
•••••	Five flashes, 4 second pause	LED lamp fault



Detection area	Hold-time	Daylight threshold
S1 1 ● 100% ● 50%	S2 S3 2 3 ● 5s ● 60s ● 5min ● 10min	S4 4 ● Disable ● 30lux
Detection area means detection coverage. It can be adjusted by combining DIP switches for specific application.	Hold-time means the time period the light will be ON after the last detection.	Daylight sensor prior to motion sensor. Set threshold for specific needs. If Disable, only motion sensor works.