




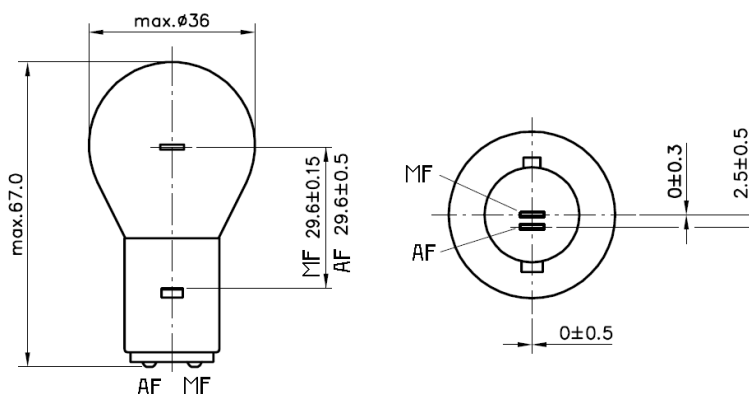
Railway Signaling

	Type RS6851 12V 30/30W BA20d
	Ordering – No. 46851
Product Description	Signaling Lamp
Features	Double Filament
Applications	Railway Signal

Technical Details

Type	RS6851	
Rated Voltage (V)	12	
Wattage (W) (at 2,5A) (MF/AF)	max. 33,0 / 33,0	
Luminous Flux (lm) (at 2,5A) (MF/AF)	380 / 380	
Average Lifetime (h) (at 2,5A) (MF/AF)	8800 / 200	
Base	BA20d	
Maximum Overall Length (mm)	max. 67,0	
Bulb Diameter (mm)	max. 36,0	
Light Center (mm)	MF	29,6 ± 0,15
	AF	29,6 ± 0,5
Filament Distance (mm)	2,5 ± 0,5	
Packaging Configuration	200 pcs.	
Environmental Remark	Product don't contain lead or mercury and is conform with Directive 2011/65/EC "Restriction of the use of certain hazardous substances in electrical and electronic equipment".	

Drawing (in mm)



valid from	04.03.2014—V2—PN14/0072
replace for	28.01.2013—V1
file	46851.100.pdf