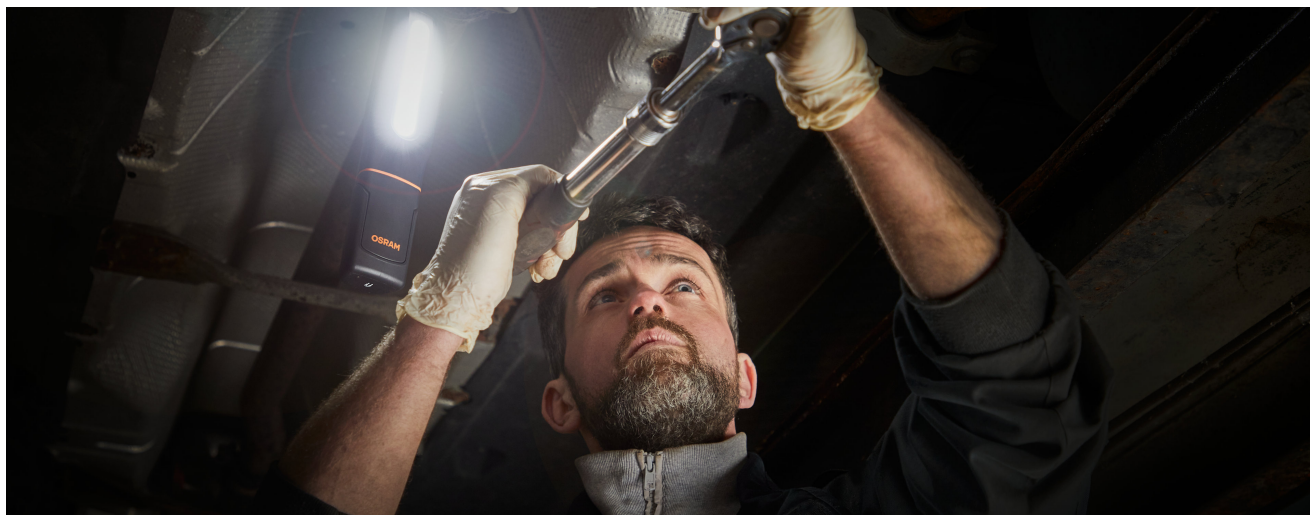


# LEDinspect MAX500

LED Inspectionlights



### Multi-Angle Flex & Twist

High flexibility due to multiple positioning possibilities



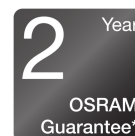
### 2in1

LED Inspectionlight & UV lamp in one



### 500 Lumen

Three light functions - high with up to 500 lm, low with up to 250 lm and torchlight function with up to 70 lm



### 2-year-OSRAM guarantee\*

Systematic quality assurance measures underpin the premium workmanship and functionality of our products. Innovative technology and excellent quality really pay dividends for our customers



### Light is versatile

With three light functions - high with up to 500lm, low with up to 250lm and UV torchlight, the MAX500 offers high flexibility and different application possibilities. The 360° twist and 180° flex base give maximum flexibility to be able to adjust the angle of light exactly where needed. The integrated charge indicator shows the charging status of the rechargeable battery - up to 4.5h operating time at high power or up to 7.5h at low power. In accordance with the IP protection class IP65, this inspection light has protection against the ingress of dust and water and is tested for impact resistance in accordance with IK08. This inspection light contains an integrated hook & magnets for hands-free work and easy attachment and is therefore ideal as a light for manual activities, car repairs and in everyday life. In addition, OSRAM grants a 2-year guarantee on this product\* USB charging cable and mains charger included.

# Product datasheet

## Technical data

### Product information

|   |                       |
|---|-----------------------|
| Order reference                             | LEDIL402              |
| Application (Category and Product specific) | LED inspection lights |

### Electrical data

|                 |         |
|-----------------|---------|
| Nominal wattage | 16.50 W |
| Nominal voltage | 3.7 V   |

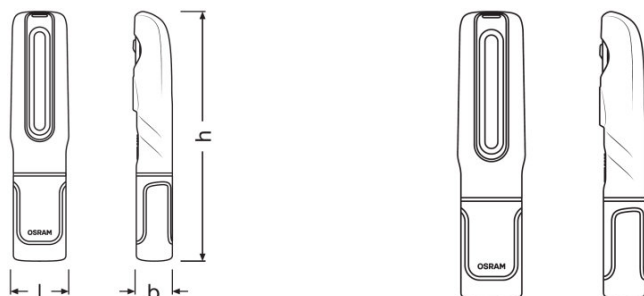
### Photometrical data

|                   |        |
|-------------------|--------|
| Color temperature | 6000 K |
| Luminous flux     | 500 lm |
| Light color LED   | White  |

### LED module information

|                           |   |
|---------------------------|---|
| Number of LEDs per module | 2 |
|---------------------------|---|

### Dimensions & weight



|                |          |
|----------------|----------|
| Product weight | 350.00 g |
| Length         | 253.0 mm |
| Width          | 59.0 mm  |
| Height         | 44.0 mm  |

### Colors & materials

|            |                |
|------------|----------------|
| Base color | Black / Orange |
|------------|----------------|

### Lifespan

|           |         |
|-----------|---------|
| Guarantee | 2 years |
|-----------|---------|

## Product datasheet

### Additional product data

|                              |                                  |
|------------------------------|----------------------------------|
| Type of Battery              | Rechargeable                     |
| Number of included batteries | 1                                |
| Scope of battery             | Yes                              |
| Battery                      | High-quality lithium-ion battery |

### Capabilities

|            |     |
|------------|-----|
| Technology | LED |
|------------|-----|

### Certificates & standards

|           |                  |
|-----------|------------------|
| Standards | CE/EMC/MSDS/ROHS |
| IK Class  | IK08             |

### Country specific categorizations

|                 |          |
|-----------------|----------|
| Order reference | LEDIL402 |
|-----------------|----------|



Detail



Detail



Detail

## Product datasheet



Detail





Detail

### Logistical Data

| Product code  | Product description | Packaging unit (Pieces/Unit) | Dimensions (length x width x height) | Volume               | Gross weight |
|---------------|---------------------|------------------------------|--------------------------------------|----------------------|--------------|
| 4052899623835 | INSPECTION LAMP     | Folding carton box<br>1      | 90 mm x 50 mm x<br>262 mm            | 1.18 dm <sup>3</sup> | 770.00 g     |
| 4052899623958 | INSPECTION LAMP     | Shipping carton box<br>6     | 200 mm x 170 mm x<br>290 mm          | 9.86 dm <sup>3</sup> | 7420.00 g    |

The mentioned product code describes the smallest quantity unit which can be ordered. One shipping unit can contain one or more single products. When placing an order, for the quantity please enter single or multiples of a shipping unit.

### Download Data

| File  |
|---|
|  User instruction<br>LEDinspect MAX 500 LEDIL402           |
|  Movie application<br>LEDinspect Inspection Lights Trailer |

#### Application advice:

For more detailed application information and graphics please see product datasheet and user instruction

\*for precise conditions please refer to:

[www.osram.com/am-guarantee](http://www.osram.com/am-guarantee)

#### Application advice

For more detailed application information and graphics please see product datasheet.

**Disclaimer**

Subject to change without notice. Errors and omission excepted. Always make sure to use the most recent release.

**OSRAM**